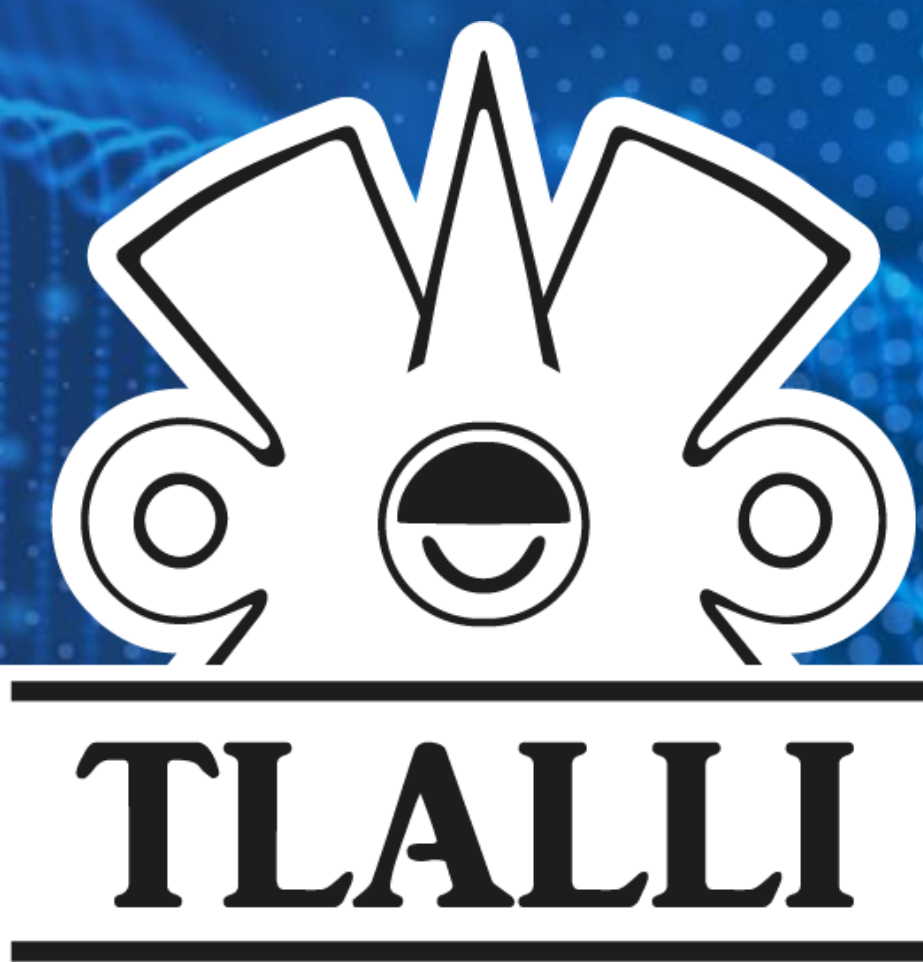




Enabling the georeferencing of statistical information



Why?



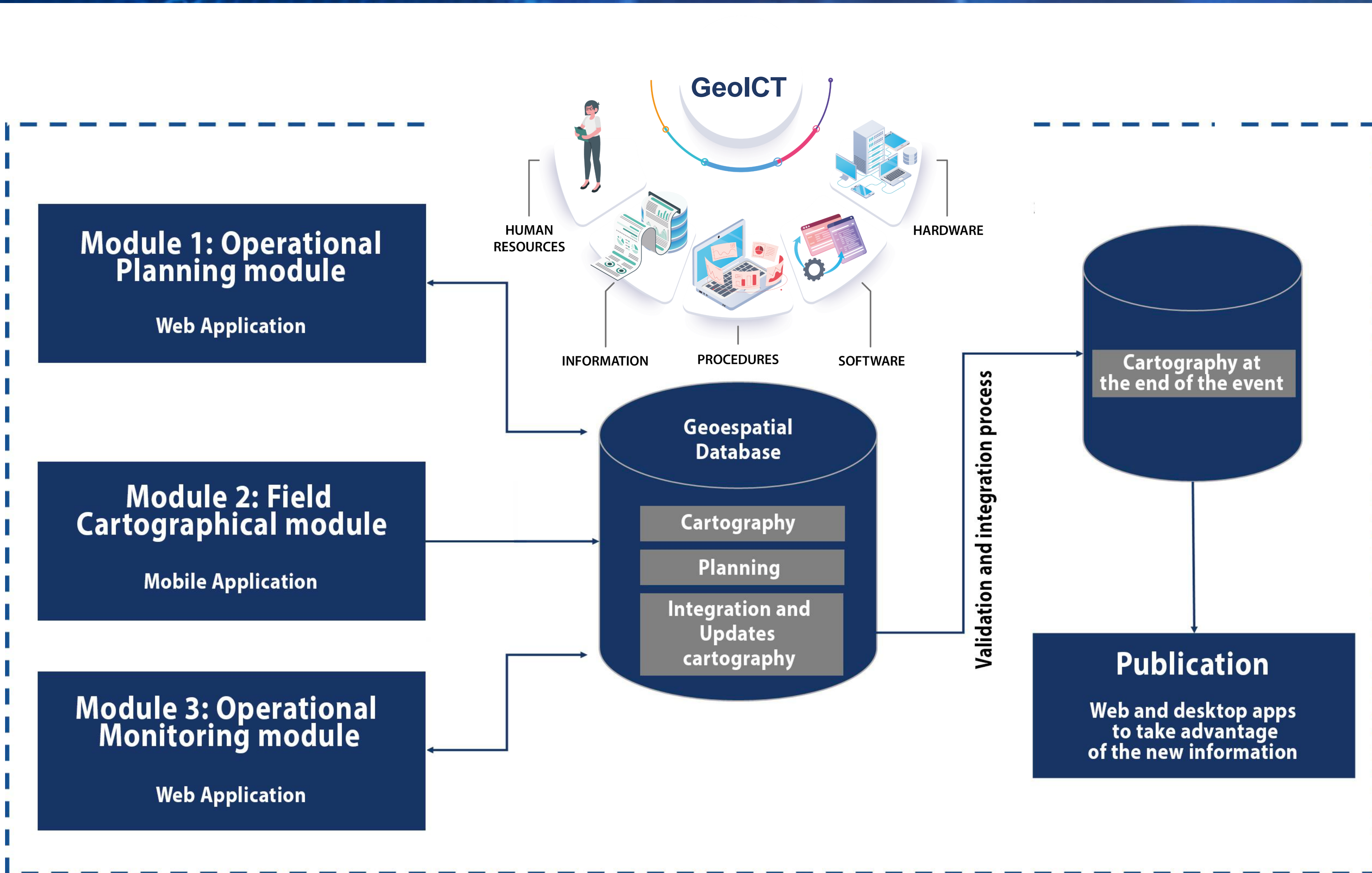
Georeferenced data

- Provide georeferenced data.
- Associated with regular or irregular framework.
- To support better public policy design and verification.
- To support location base services.

Platform objective

Considering that geospatial information is critical, this platform provide geoinformatics tools to facilitate the execution of field operations to collect statistical and geographic information and allow, in field, georeferencing the information.

GeoInformatics tools.



Timeline, evolution of the GEOMATIC SOLUTION.



Operational monitoring module.



2007



Operational planning module.

2009

Field cartographic module.



2010



Integration. Planning + monitoring + field.

2014

Field cartographic module.



2015



Integration. Planning + monitoring + field.

2019

Monitoring + field in Android.



2020



Integration. Planning + monitoring + field.

2022

OPERATIONAL PLANNING MODULE

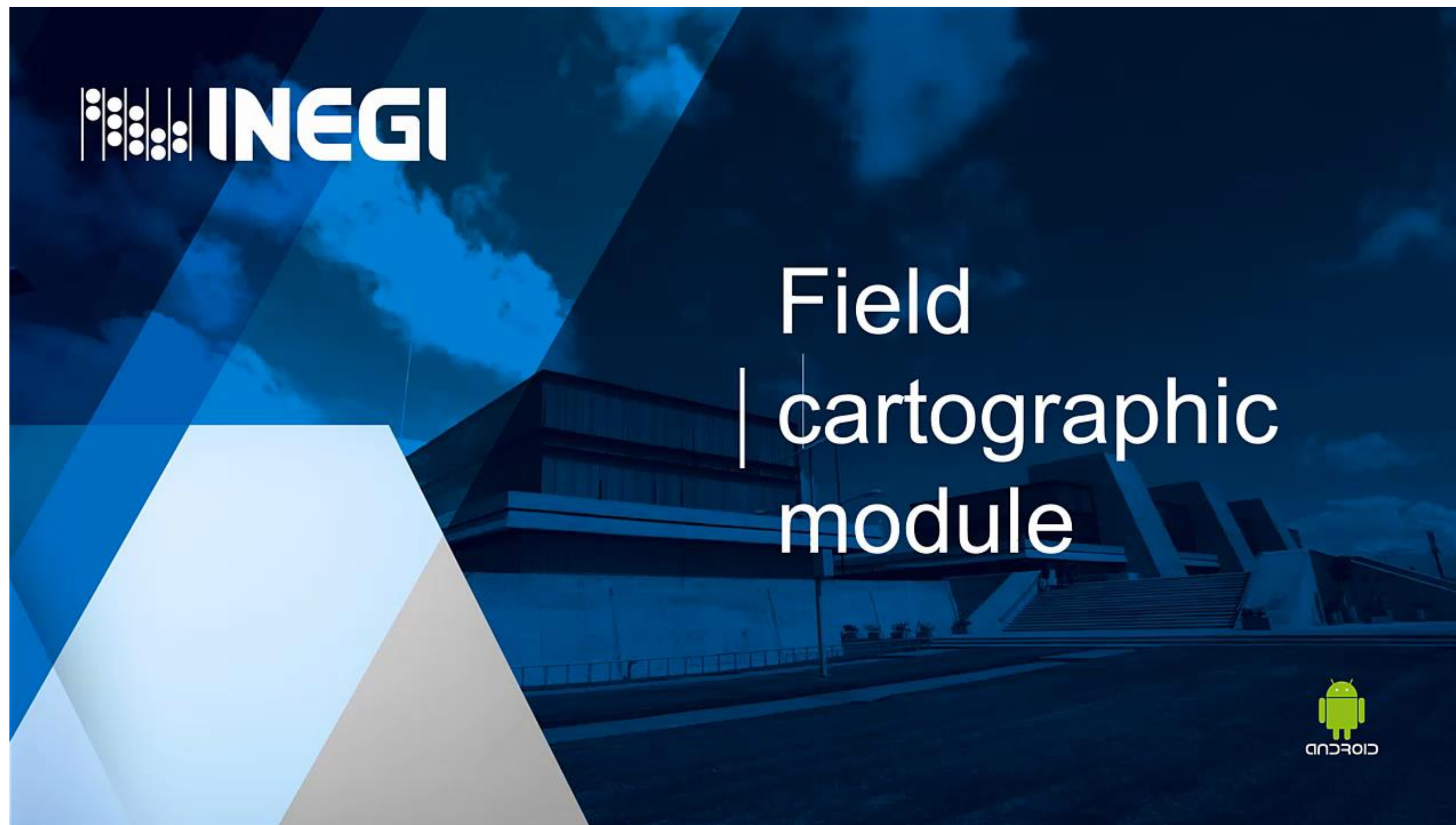


- ○ ● Web application that allows detailed event planning (Census, surveys and geographic events) by assigning control sections, workload and time distribution.



FIELD CARTOGRAPHIC MODULE

- ○ ● Mobile application to georeference economic units, dwellings, service and others, as well as identifying and applying cartography updates detected during the event.



OPERATIONAL MONITORING MODULE

Web application for monitoring the advance and geographical coverage of the event, provide maps and various tools for analysis.



GEOREFERENCING ECONOMIC UNITS



A web application that provides tools to georeference administrative records. It provides a homogeneous and systematic address definition.



INEGI



Censos
económicos
2019

Georeferencing economic units



INEGI



Mapa Digital
de México



Digital Map of Mexico

Results publication

The Digital Map of México, as a digital window to know statistical and geographic information generated in Mexico is the mechanism for publishing geographic and statistical information generated by INEGI and other state units of México.

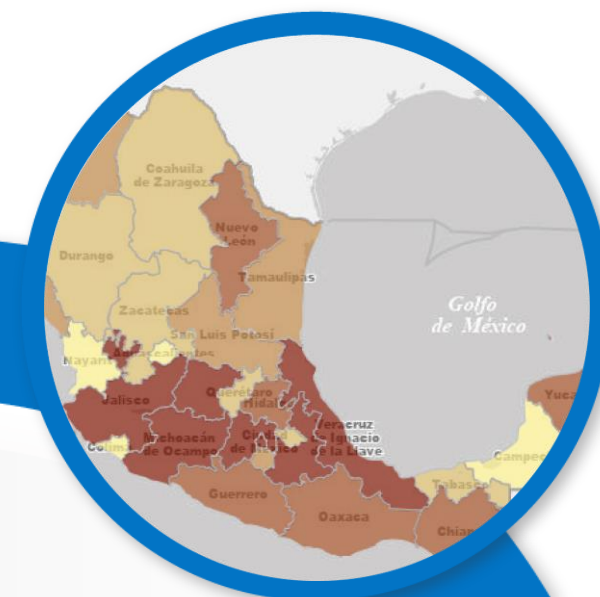
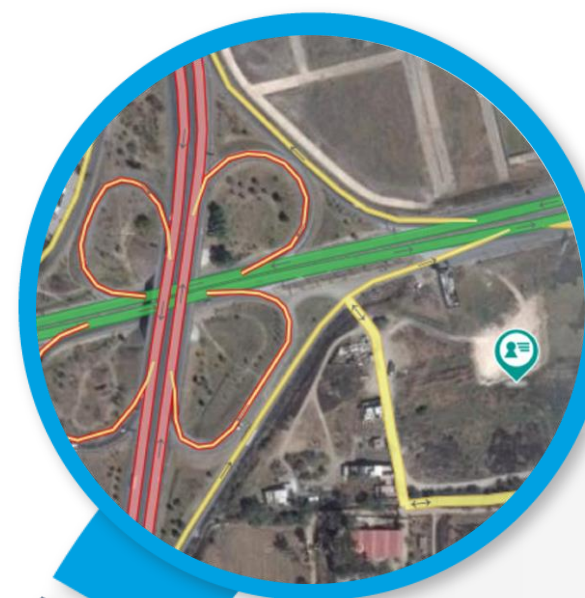


Information available for **PUBLIC USE**



National Road Network

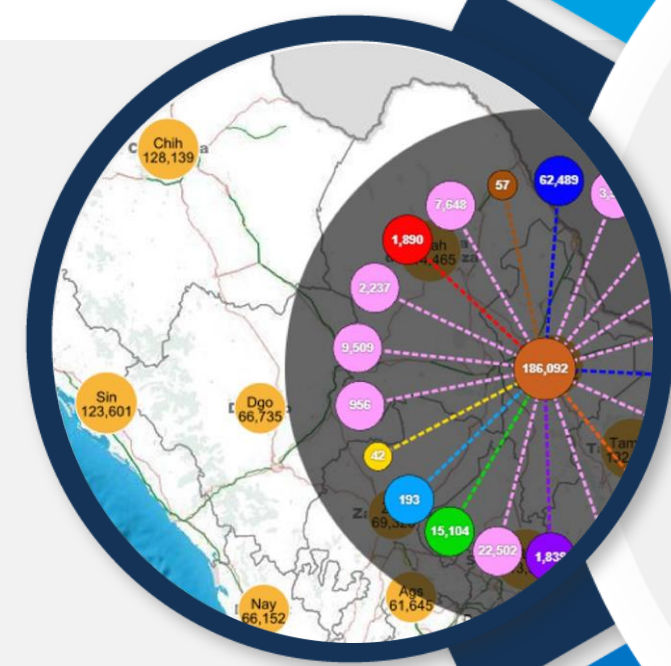
Gas stations, Toll booths, Reference poles



Economic Census

DENUE

5,528,698 economic units nationwide, updated to May 2022



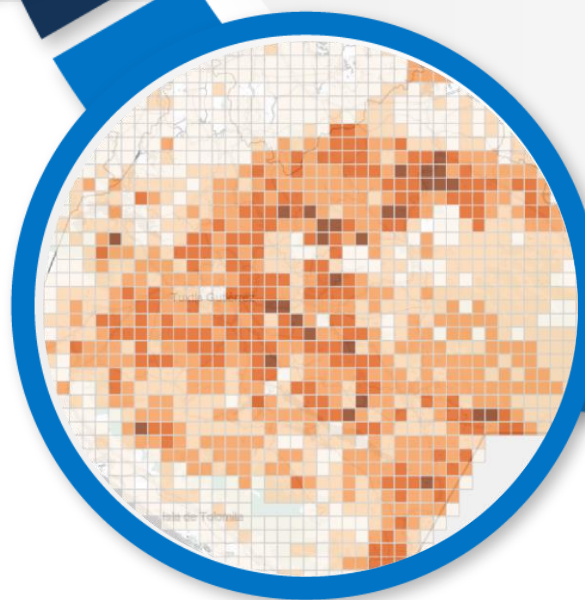
Mapa Digital
de México
EN LÍNEA

Ortophotos

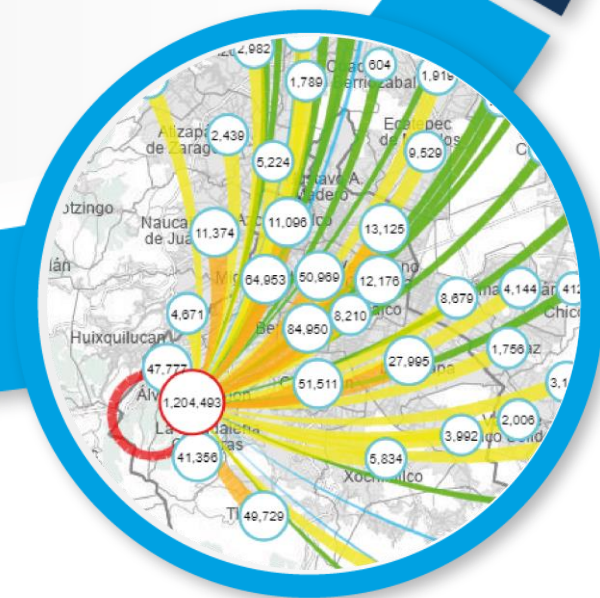
Scale 1:20 000 (12,915)
Scale 1:10 000 (13,334)



AGRICULTURAL CENSUS



Origin-Destination Survey in Households of the Metropolitan Zone of the Valley of Mexico



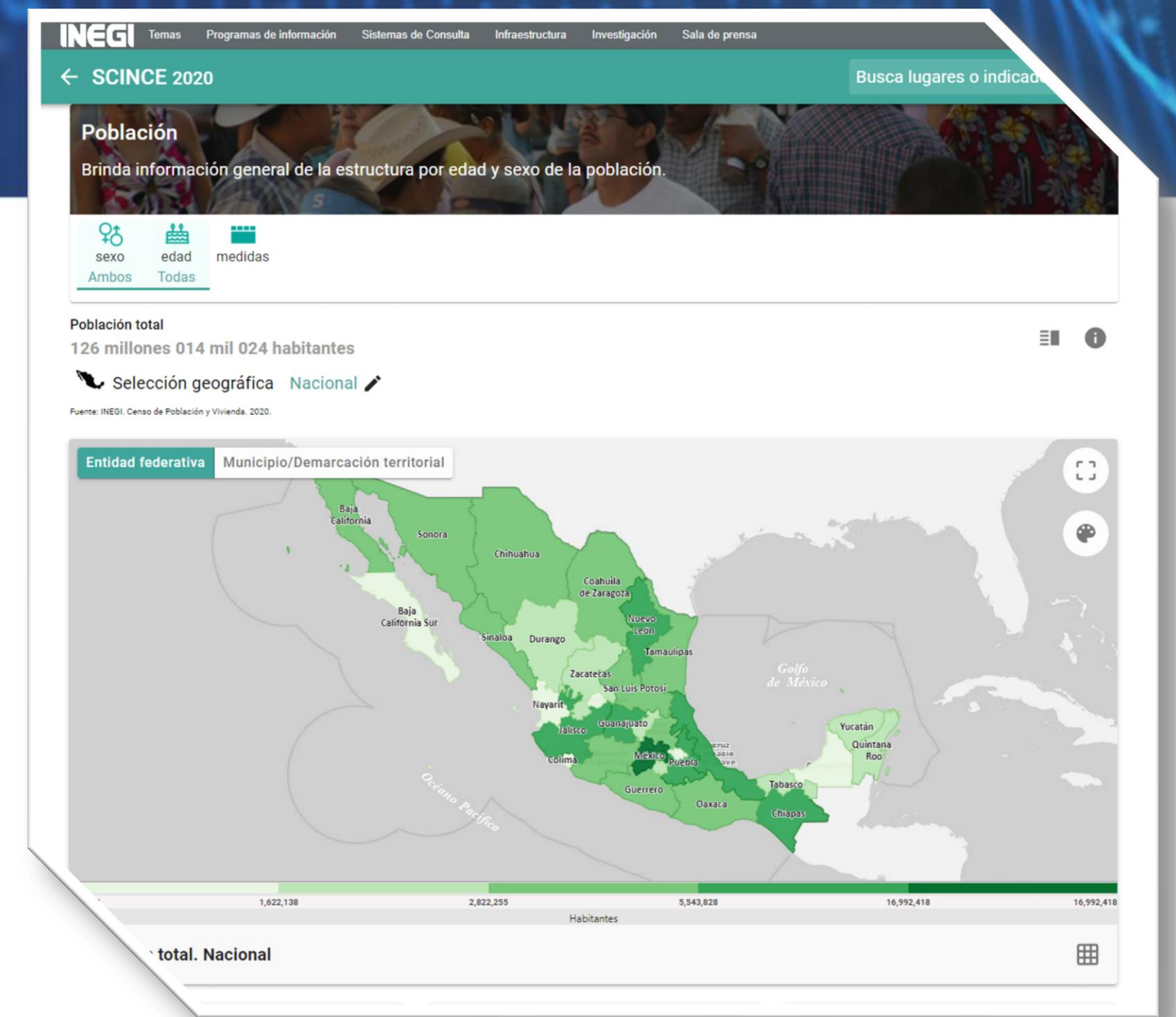
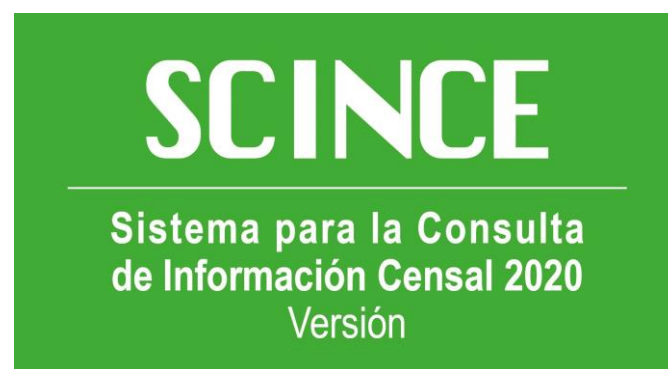
More than 270 statistical and geographical data layer





MxSIG is a software solution that allows the integration of Geomatics Solutions for the web. The software that makes it possible is a mixture of the best open source, free software and software developed at INEGI, which, under the MxSIG concept, is also released under a free or open-source software license .

SOME SUCCESSFUL USE CASE



**Mapa Digital
de México**
EN LÍNEA



UN-GGIM:Américas
Statistical and Geospatial Framework for
the Americas (MEGA)





Thank you for your attention



Conociendo
México

800 111 46 34
www.inegi.org.mx
atencion.usuarios@inegi.org.mx

    **INEGI** Informa

Lic. Luis Gerardo Esparza Ríos

gerardo.esparza@inegi.org.mx